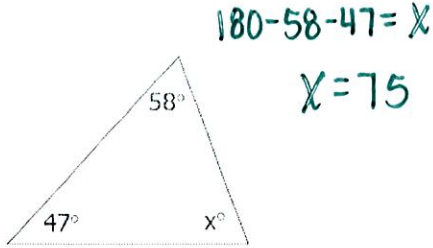


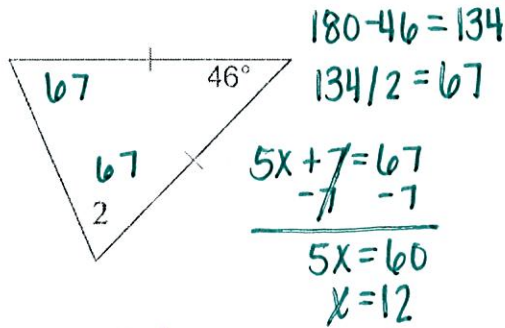
Day 4 -- Triangle Base Angles and Exterior Angles

Find the value of "x".

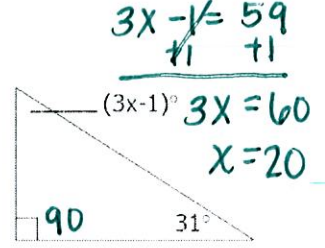
1) $x = 75$



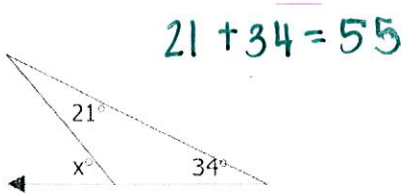
2) $m\angle 2 = 5x + 7$ $x = 12$



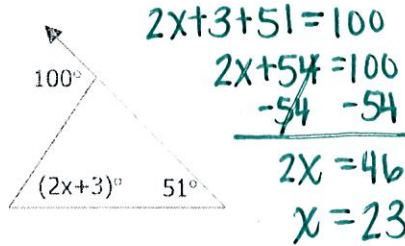
3) $x = 20$



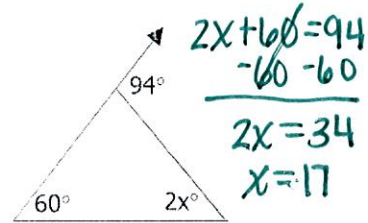
4) $x = 55$



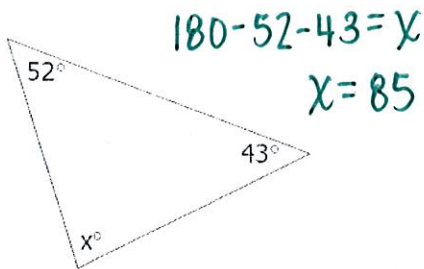
5) $x = 23$



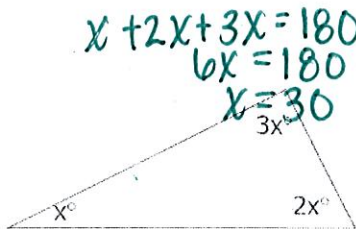
6) $x = 17$



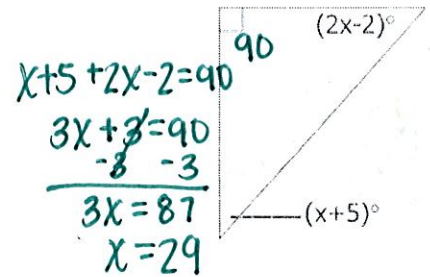
7) $x = 85$



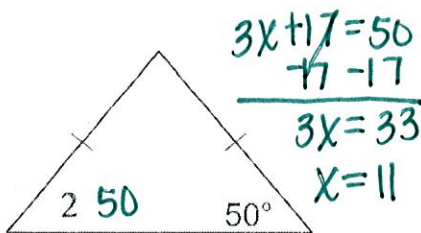
8) $x = 30$



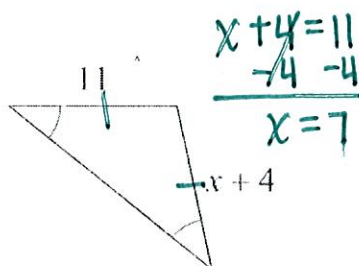
9) $x = 29$



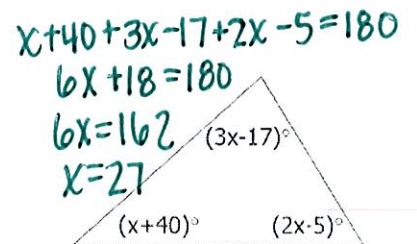
10) $m\angle 2 = 3x + 17$ $x = 11$



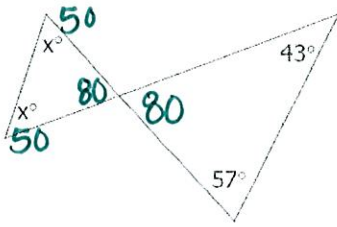
11) $x = 7$



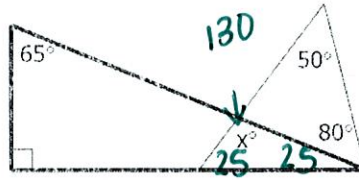
12) $x = 27$



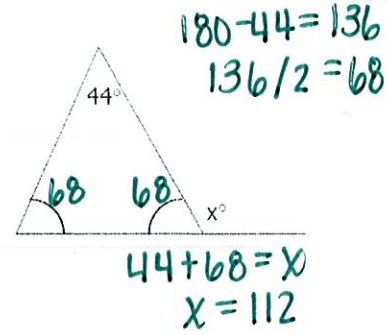
13) $x = 50$



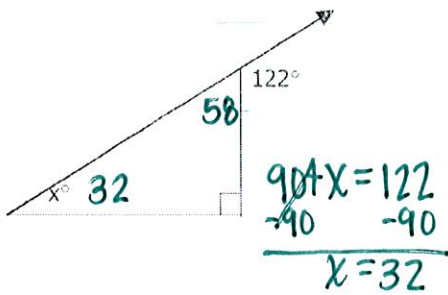
14) $x = 130$



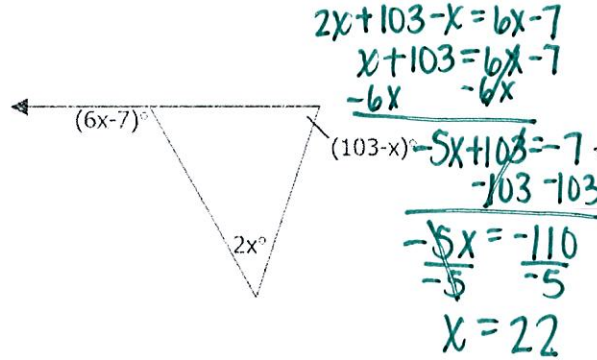
15) $x = 112$



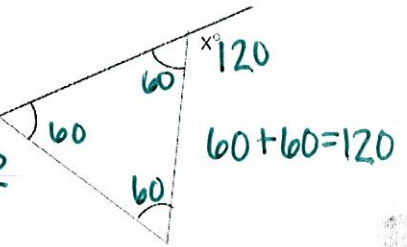
16) $x = 32$



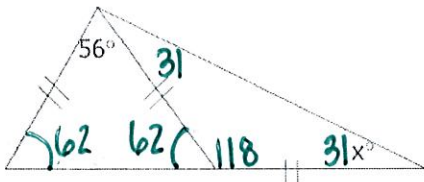
17) $x = 22$



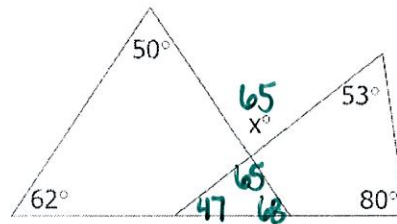
18) $x = 120$



19) $x = 31$



20) $x = 65$



Find the measure of each angle.

21) $\angle 1 = 112$

22) $\angle 2 = 68$

23) $\angle 3 = 90$

24) $\angle 4 = 90$

25) $\angle 5 = 22$

26) $\angle 6 = 158$

